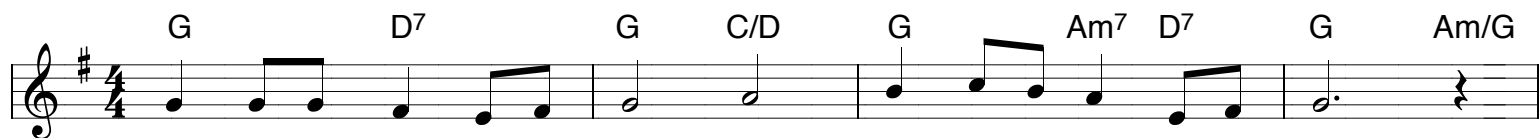


HINE E HINE

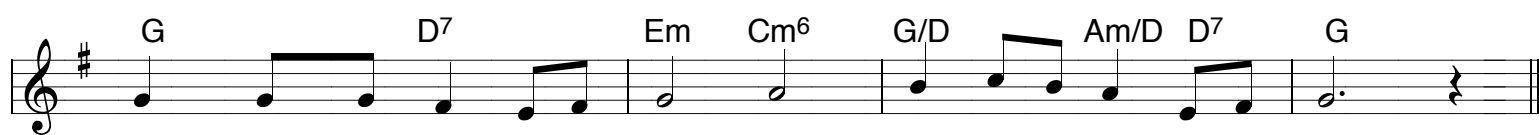
(GOODNIGHT KIWI SONG)

Composed by Te Rangi Pai
English lyrics and arrangement by Gary Daverne

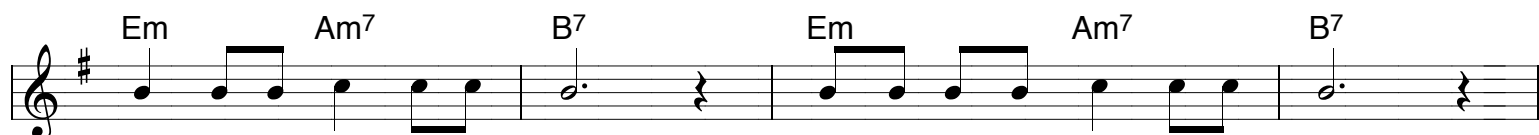
Gently ♩ = 74



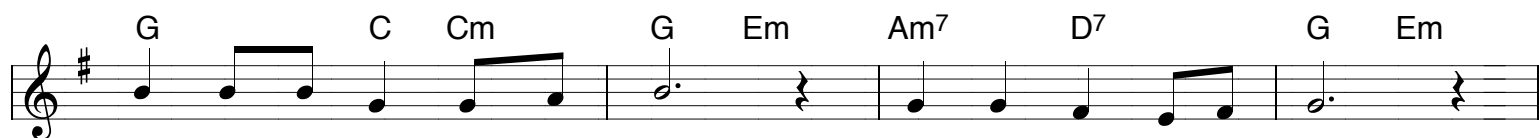
E ta - ngi - a - n - a ko - e, HI - N - E, E HI - NE.
Gent - ly the moon it has ris - en, HI - N - E, E HI - NE.



Kua nge - nge a - n - a ko - e, HI - N - E, E HI - NE.
Sleep through the night till the mor - ning, HI - N - E, E HI - NE.



Ka - ti to po - u - ri ra, No - ho i te a - r - o - ha.
Peace ful - ly sleep all is calm, Dream a hap - py dream in my arms.



Te nga - kau o te ma - tua. HI - NE, E HI - NE.
Rest, go to sleep safe from harm. HI - NE, E HI - NE.



HI - NE, E HI - NE.
HI - NE, E HI - ne.

V2. E Hari to moe moea,
Hine e hine.
Marama ahua,
Hine e hine.
I roto i to moenga,
Mehemea he marama.
Ka tai mai te Reinga,
Hine e hine. Hine e hine

V2. See how the day it is dawning,
Hine e hine.
Warm is the sun in the morning,
Hine e hine.
Gently you wake from your sleep.
Silence, not a word do we speak.
Sensing a love that is deep,
Hine e hine. Hine e hine.